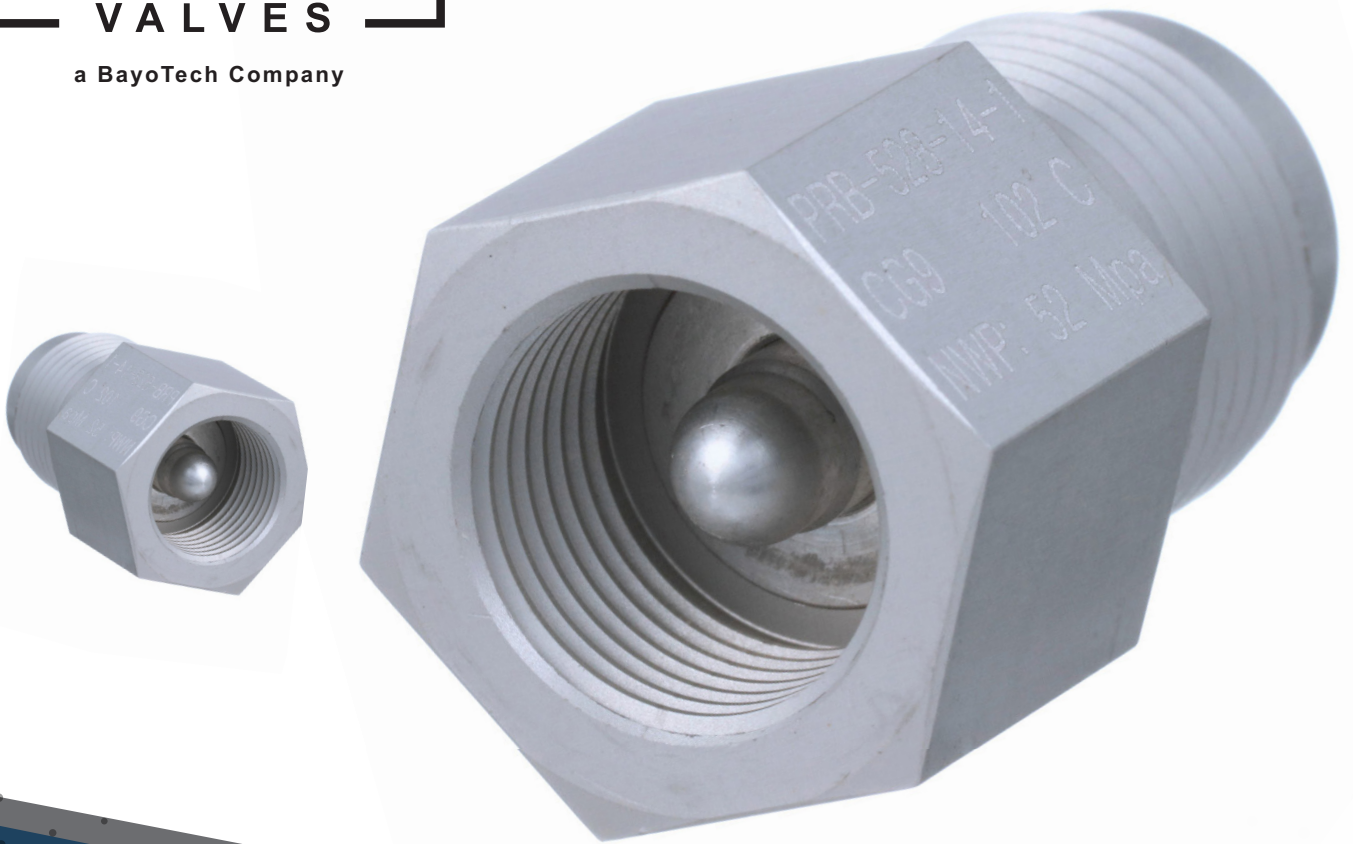




a BayoTech Company



# GLASS BULB PRESSURE RELIEF DEVICE

The most reliable and  
safest PRD available.

[noramvalves.com](http://noramvalves.com)



## GLASS BULB PRESSURE RELIEF DEVICE

NorAm Valves designs and manufactures premier pressure relief devices (PRD) for the gas transport industry. The thermally-activated PRD protects against failure of a pressurized cylinder by quickly releasing the contained gas. Replacing the less reliable eutectic metal or fusible metal orifice barriers with glass bulb technology. NorAm's patented PRD is the most reliable and safest option in the marketplace today.

The PRD complies with the Compressed Gas Association's Pressure Relief Device Standards Part 1 CGA S-1.1 – 2022 types CG-9 (natural gas) and CG-10 (Hydrogen) for use on cylinders up to 7540 psi (520 bar).

### KEY BENEFITS

#### High Reliability

The glass bulb is activated by temperature (102°C), not pressure. It has a faster reaction time than traditional thermal relief devices. Even if a cylinder is less than full, the device can be activated in a fire.

#### Superior Safety

BayoTech's PRD has a flow rate that exceeds any other product currently available. With glass bulb technology, there is no danger of residual metal blocking the venting process. Emergency venting can occur efficiently and rapidly, thereby greatly improving safety.

#### Drop-In Replacement

BayoTech's glass bulb PRD technology is an easy-to-install drop-in replacement for traditional Sherwood CG4/CG5 thermal relief devices used with most Type III and Type IV composite cylinders.

Glass Bulb PRD		
Catalog number		PRB-528-14
Pressure rating		7540 psi / 520 bar
Over pressure / burst (in vent chamber)		>30,160 psi
Activation temperature Standard	Standard	216°F / 102°C
	Optional	230°F / 110°C
Dimensions		1.54" Long; 7/8" hex x 0.70"
Inlet port (no crush washer required)		G3/8"-19 BSPP (sometimes called 0.650"-19)
Vent connection (form per SAE J514 / JIC)		3/4"-16 x 37° flare for 1/2" tube
Mating vent tube (user provided)	Tube OD & Form	1/2" or 12mm tube, flared per SAE J533b
	Max Wall Thickness	0.065" (1/2" tube) or 1.5mm (12mm tube)

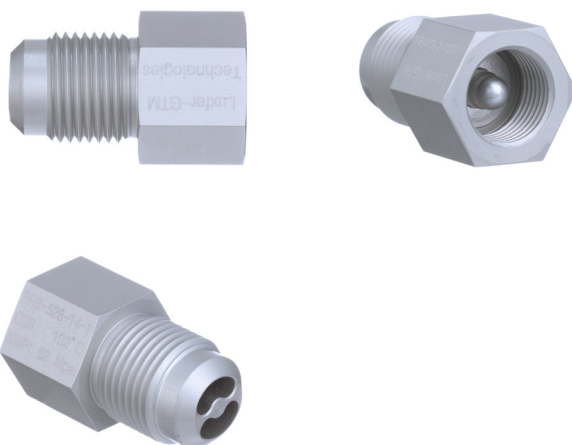
All specifications are subject to change.

### APPLICATION

- » Type III and Type IV composite cylinder-based, high-pressure gas storage systems
- » Hydrogen fuel cell vehicles

### FEATURES

- » Fast reaction time
- » Activation based on temperature (102°C), not pressure
- » No eutectic or fusible metal to clog vent tubing
- » 37° JIC outlet connection
- » Rated to 520bar
- » SAE 316L stainless steel construction
- » Warranty [need details]
- » Drop-in replacement for Sherwood CG5 PRD



### CONTACT

Phone 1.918.439.4248  
Email sales@noramvalves.com  
Web noramvalves.com