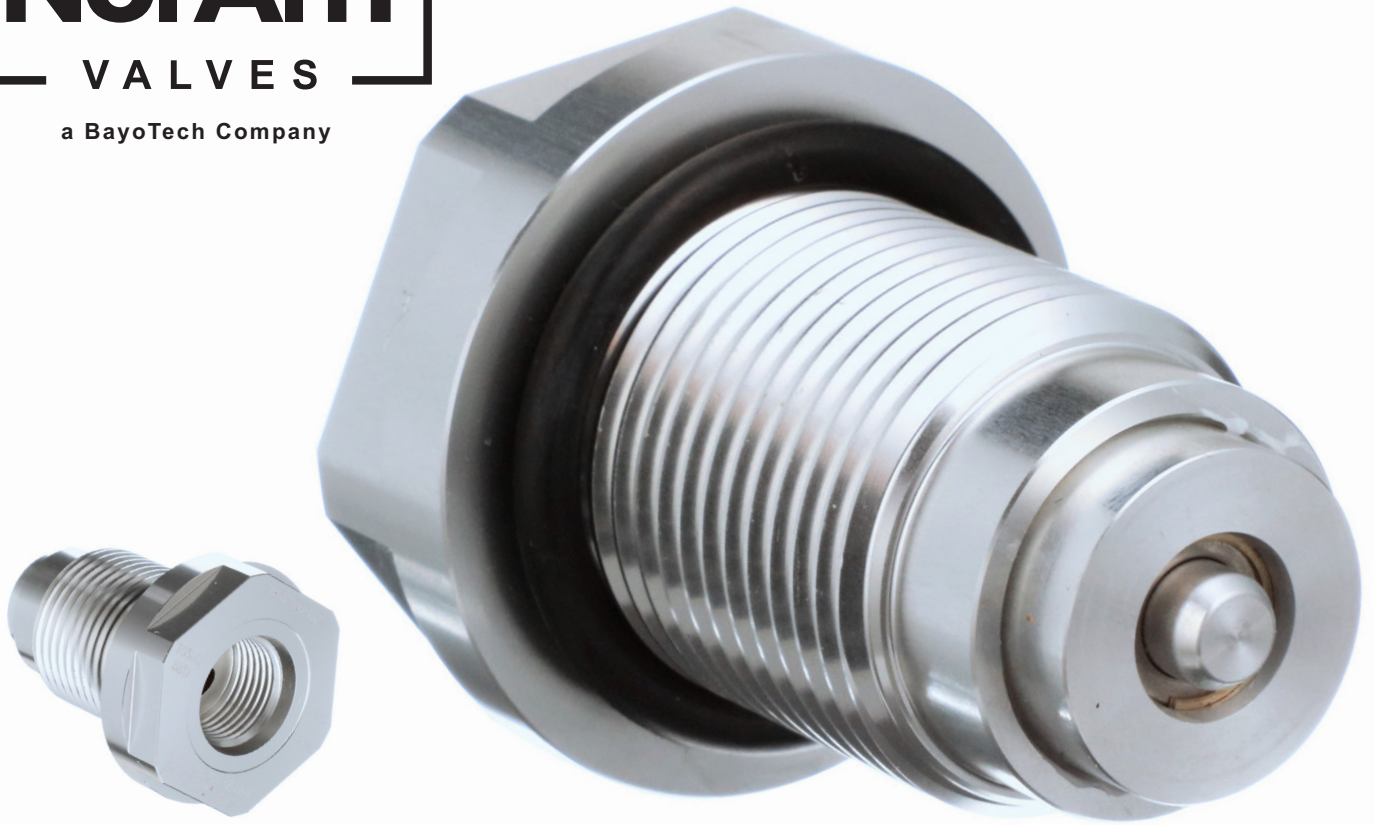




a BayoTech Company



CYLINDER END PLUG

The most reliable and
safest plug available.

noramvalves.com

CYLINDER END PLUG

A leader in safety, NorAm Valves manufactures top of the line Cylinder End Plugs that are the most reliable and safest option in the marketplace today. The thermally activated Cylinder End Plug protects against failure of a pressurized cylinder by quickly releasing the contained gas. This low-profile Cylinder End Plug offers a tamper proof PRD and threading for compression fittings to direct flow of pressure. This aluminum cylinder plug is ideal for large capacity, high pressure cylinders, and when coupled with the NorAm Eagle ¼-turn valve, it completes the gas storage and delivery package.

The Cylinder End Plug is certified to the Compressed Gas Association's Pressure Relief Device Standards Part 1 CGA S-1.1 – 2022 types CG-9 (natural gas) and CG-10 (Hydrogen) for use on cylinders up to 7540 psi (520 bar). (CG-10 cert expected to be completed in August)

KEY BENEFITS

Tamper Proof Installment

Utilizing the low-profile design, NorAm's Cylinder End Plug places the glass bulb within the plug section that sits inside the cylinder. Unlike most standard PRDs where the bulb is at the front of the plug, this system eliminates the possibility of dislodging the glass bulb during installation and ensures maximum reliability in case of a failure.

High Reliability

The glass-bulb orifice barrier is activated by temperature (102°C), not pressure. It has a faster reaction time than traditional thermal relief devices. Even if a cylinder is less than full, the device can be activated in a fire.

Superior Safety

BayoTech's Cylinder End Plug has a flow rate that exceeds any other product currently available. With glass bulb technology, there is no danger of residual metal blocking the venting process. Emergency venting can occur efficiently and rapidly, thereby greatly improving safety.

Cylinder End Plug		
Catalog number		
Pressure rating vs Model Number and stud thread	ABL228: 1½"-12	5075 psi / 350 bar
	ABL233: 1½"-12	6525 psi / 450 bar
	ABL235: 1½"-12	7540 psi / 520 bar
Activation temperature	Standard	216°F
	Optional	230°F
End plug's head dimensions	350 bar	2" round x 1.5" hex 13mm
	450, 520 bar	2" hex x 13mm

All specifications are subject to change.

APPLICATION

- » Type III and Type IV composite cylinder-based, high-pressure gas storage systems
- » Natural Gas Pipelines

FEATURES

- » Fast reaction time
- » Activation based on temperature (102°C), not pressure
- » No eutectic metal to clog vent tubing
- » -8 SAE heavy duty JIC outlet connection (3/4"-16 ORB) (Need to Confirm)
- » Rated to 520 bar
- » 6061 construction (350, 450 bar) SAE 316L stainless steel construction (520 bar)
- » Compatible with NormAm Eagle ¼-Turn Valve
- » Warranty [need details]



CONTACT

Phone 1.918.439.4248
Email sales@noramvalves.com
Web noramvalves.com